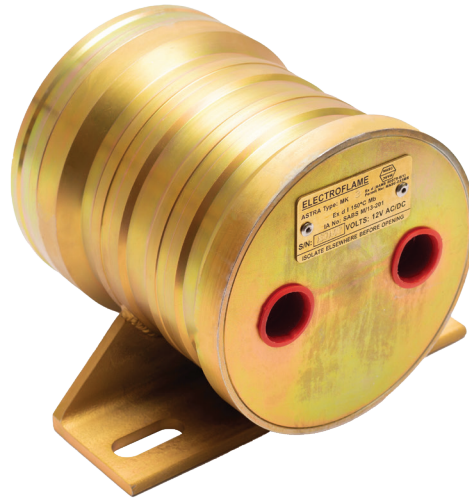
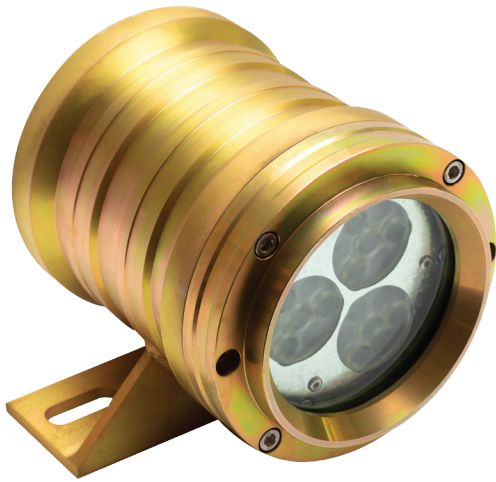




Electroflame (PTY) LTD

Design | Manufacture | Supply
Ex Equipment



Mining

Astralite MK3 LED Headlight

Application

Astra MK3 light has an array of white LED's and is used as a headlight for moving machinery and vehicles in underground Zone 1 areas. On request the fitting can also include an array of Red Led's to create a combined head and tail light.

Construction

The LED Astra headlight uses the same housing as the Astra MK1 and MK2. The internal light module including led's, lenses, electronics and heat sink all attached to the lid forming an integral unit. When the lid is removed the complete internal light unit is removed. In this way the Astra MK1 and Mk2 can be upgraded to a LED unit by simply replacing the lid.

Operation

The 12 white 5000K led's each have a bypass zener which allows the unit to continue operating in the case where one or more Led fails. An internal thermal sensor regulates the power to the Led's to prevent overheating. Lenses mounted over the Led's allow for a controlled beam spread. At 100% intensity the beam produces 60 lux at 20 meters. In the case where the red Led's are included, the 12 red and 12 white led's are switched on by powering two separate inputs which may have one common connection if required. The white Led's produces a wide angle high intensity beam while the red Led's produces a strong red glow.

Electrical Specifications

- AC/DC : 9 - 20V,
30W at 100% intensity

Certification

- Ex d I 150C Mb
- IA Number: SABS M/13-201

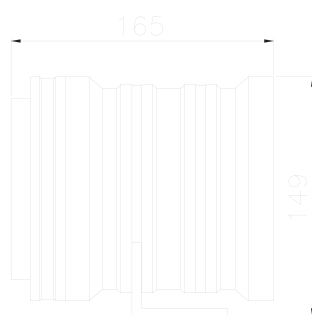
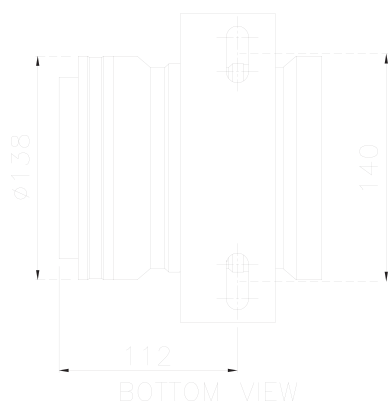
Order Information

Type of Astralite

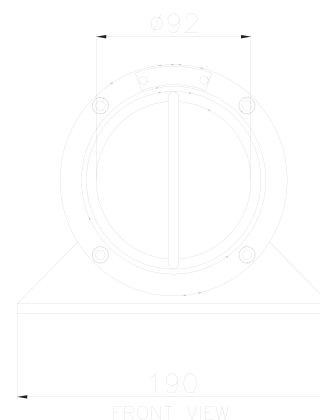
- Complete Fitting
- MK1 & MK2 Upgrade Kit

Part Number

AMAST-100
SMAST-101



SIDE VIEW



FRONT VIEW